

# Designed for modern living

START YOUR LUXURY  
WATER JOURNEY  
TODAY



# BWT Perla Silk Enjoy - Protect - Save

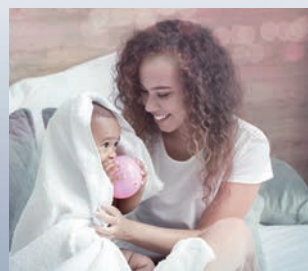
SILKY, SOFT LUXURY WATER, THE PERFECT LIFESTYLE CHOICE



REVITALISING SHOWERS  
& LUXURY BATHING



SPARKLING KITCHENS  
& BATHROOMS



SOFTER SKIN &  
SHINIER HAIR



SOFTER CLOTHES &  
FLUFFIER TOWELS

**Automatic & intelligent regeneration**  
for uninterrupted softened water supply

**Data protection**

Memory function stores data in the event of a power cut

**Multifunction back-lit display**  
with capacity indicator

**'Rotary' valve** for reliability

**Blending valve** to help you set the perfect water hardness

**Easy lift lid** for easy loading of salt blocks or cubes

**Proportional brining** only regenerates the capacity used to save water & salt

**Premium 'monospheric' resin** for maximum softening efficiency

**Brine safety valve** for added protection

**Stylish design and impressive performance** perfect for today's busy lifestyles



\* Batteries not supplied  
\*\* Please contact us for more details

SIMPLY SET THE TIME, WATER HARDNESS  
AND SALT TYPE AND YOU ARE READY TO  
GO...

...THEN SIMPLY BOOK YOUR FULLY  
INCLUSIVE FREE@HOME COMMISSIONING  
VISIT WITH YOUR BWT ENGINEER.



**Uniconnect block and high flow hoses** – offers simple installation, bypass operation and maintains earth bonding



**Mains or domestic battery supply:** Independent battery operation for up to 3 months, when mains supply is not available (Not suitable for Wi-Fi models) \*



**BWT Wi-Fi:** Take control and stay connected when you select Perla Silk Wi-Fi models



**Rechargeable Power Bank:** will provide 3–6 months of softener use (Optional Extra)\*\*



**BWT UPS:** Additional protection against power cuts and unstable power supplies, with built in lithium ion battery (Optional Extra)\*\*



**Tested and fully compliant: with EN4743**

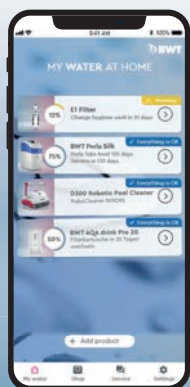


## MORE WARRANTY LESS MAINTENANCE

The BWT Perla Silk is supplied with our Peace of Mind 5 year parts and 2 year labour @home warranty. Upgrade Options:

1. A full 6 years @ Home parts and labour warranty.
2. The Perla Silk full service package which includes the full 6 years @Home warranty as well as the benefit of 2 service visits (normally around the 2nd and 4th anniversary of installation.) Both available from our own Customer Service team at any time within 60 days of installation.

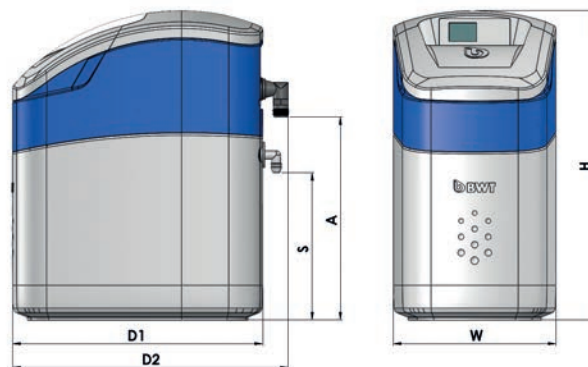
# BWT Best Water Home



...is more than the free App for your BWT Perla Silk. It's your entry into the new era of customer satisfaction, your personal water consultant for countless BWT products and brings added value in terms of information, safety and comfort and a whole world of advantages await you.



BWT Best Water Home



*BWT Perla Silk  
the right choice*

BWT PERLA – SILK	MODEL	S	M	L	XL
STANDARD AND WI-FI ENABLED MODELS	Y/N	Y	Y	Y	Y
FAMILY SIZE – Based on average usage at 300ppm		Up to 4 People	Up to 6 People	Up to 8 People	Up to 10 People
NOMINAL CONNECTION OUTSIDE THREAD	BSP	¾" DN 20	¾" DN 20	¾" DN 20	¾" DN 20
NOMINAL FLOW RATE **	l/h	1440	1560	1680	1680
OPERATING FLOW RATES	l/m	5/50	5/50	5/50	5/50
MAXIMUM FLOW RATES (STRAIGHT CONNECTORS)	l/m	80	80	80	80
OPERATING PRESSURE UK MIN/MAX	BAR	1.7 / 5.0	1.7 / 5.0	1.7 / 5.0	1.7 / 5.0
PRESSURE DROP DOWN AT NOMINAL FLOW **	BAR	1.0	1.0	1.0	1.0
EXCEEDS EFFICIENCY RATING**	Y/N	Y	Y	Y	Y
BLOCK AND TABLET SALT COMPATIBLE	TYPE	Y	Y	Y	Y
CAPACITY SALT RESERVOIR	kg	12	16	24	24
WATER TEMPERATURE MIN/MAX	°C	5/30	5/30	5/30	5/30
AMBIENT TEMPERATURE MIN/MAX	°C	5/40	5/40	5/40	5/40
ELECTRICAL CONNECTION (PLUG TRANSFORMER)	V/DC	230/12	230/12	230/12	230/12
HIGH FLOW HOSES, EASY FIT UNICONNECT CONNECTOR & FITTINGS INCLUDED	Y/N	Y	Y	Y	Y
DIMENSIONS: W X D2 X H	mm	276 X 470 X 526	276 X 470 X 596	276 X 470 X 803	276 X 470 X 803
CONNECTION HEIGHT (A) / OVERFLOW HEIGHT (S)	mm	345/250	415/320	622/527	622/527
OPERATING WEIGHT, APPROX.	kg	40	50	65	70

## WHERE TO INSTALL

BWT Perla Silk should be installed on your domestic water inlet directly downstream from the water meter and any protective water filter. Generally fitted under or near a kitchen sink the chosen location will also need to be close to; a waste water pipe, an outside wall suitable for an overflow pipe and an electrical socket.

Silky soft Luxury Water protects your bathrooms and kitchen from the damaging effects of limescale. Ceramics, sanitaryware, shower screens and taps all benefit from its softer touch, helping them to stay looking like new for longer. Appliances benefit too, with no scale to zap the energy from vulnerable heating elements, items like washing machines and dishwashers not only work more efficiently but could last longer as well.

\*\* In accordance with EN14743





**BWT UK Limited**

BWT House, The Gateway Centre,  
Coronation Road, High Wycombe,  
Buckinghamshire, HP12 3SU

☎ +44 1494 838100 🖨 +44 1494 838101

✉ [enquiries@bwt-uk.co.uk](mailto:enquiries@bwt-uk.co.uk)

*bwt.com*

FOR YOU AND PLANET BLUE.