

## FAUCETS

- Elegant and safe: Smart electronics with programmable safety features
- Different color options
- Touchless sensor options for ambient water
- With flex-spout or pull-out sprays



- COOLED
- AMBIENT
- BOILED
- SPARKLING
- LIGHT SPARKLING



## CONSUMABLES



Filter with RFID chip required to exchange.

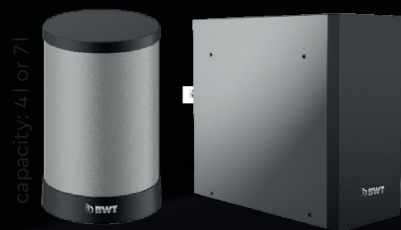


### Perfect Filtration

- Particle removal
- Chlorine reduction
- Lime scale protection
- Heavy metal reduction



## DEVICES



BWT AQUA FUSION - ALL@ONE is installed in the kitchen cabinet. It enables the user to directly tap boiling, cold and sparkling water out of the kitchen faucet, depending on the device.

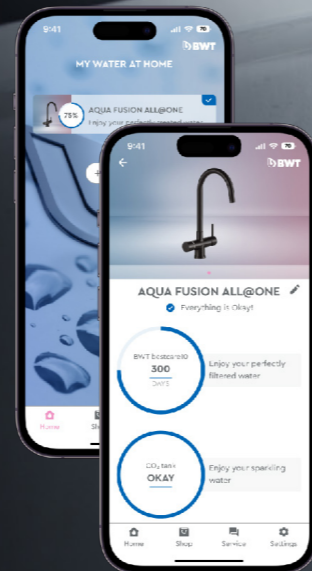
- Fits within standard kitchen cabinets
- With installation set for easy installation
- With BWT water filter for unique taste and device protection

## COMMUNICATION

The undersink devices allow settings and monitoring via app.

### Main Features

- Set temperature of chilled and boiled water
- Set volume which flows out of the faucet
- Display status of CO<sub>2</sub> cartridge and filter
- Define presets for the buttons on the faucet (bottle fill or glass fill)
- Customized safety functions



# BWT AQUA FUSION ALL@ONE



You have chosen local water that has been enriched using the patented technology from BWT. You have decided against conventional bottled water, which has to be shipped many kilometers unnecessarily and is polluting the environment.

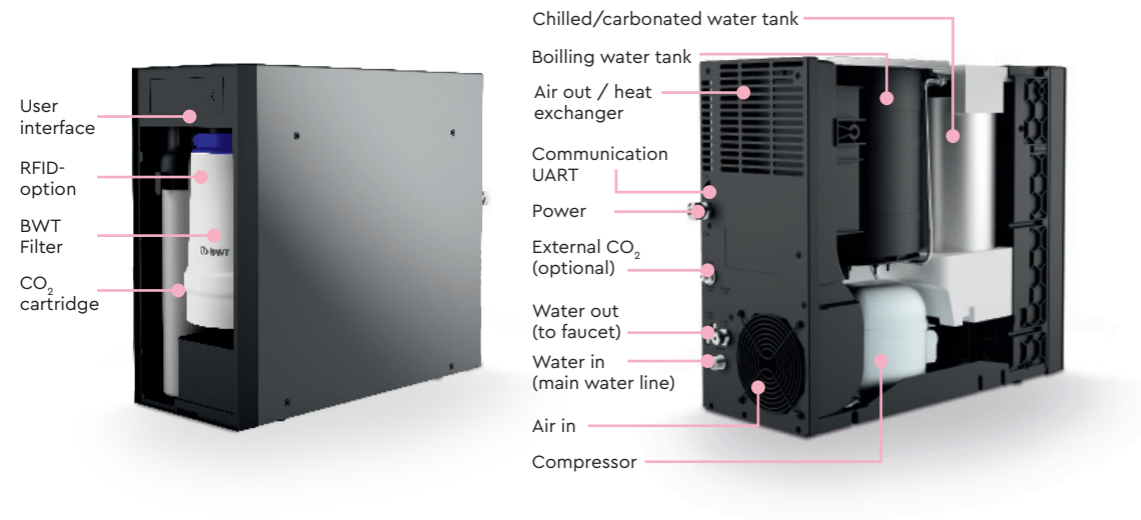
BWT Holding GmbH  
Walter-Simmer-Straße 4, 5310 Mondsee  
office@bwt.at | www.bwt.com



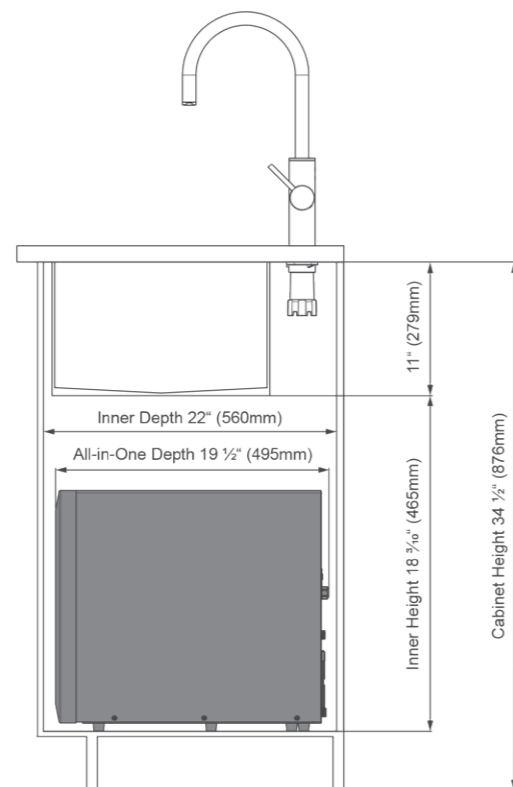
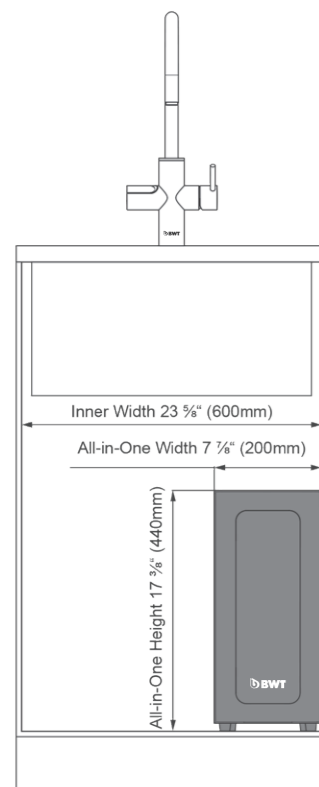
COOLED | AMBIENT | BOILED | SPARKLING | LIGHT SPARKLING



## BWT AQA FUSION – ALL@ONE



	IMPERIAL	METRIC
Height	17 3/8"	440 mm
Width	7 7/8"	200 mm
Depth	19 1/2"	495 mm



## BWT AQA FUSION – ALL@ONE TECHNICAL SPECIFICATIONS

	IMPERIAL	METRIC
Height	17 3/8"	440 mm
Width	7 7/8"	200 mm
Depth	19 1/2"	495 mm
Net weight (empty)	44 lb	20 kg
Full weight (filled)	approx. 60 lb	approx. 27 kg
System working pressure	29 – 116 psi	2 – 8 bar
Minimum water pressure	14 psi	1 bar
Maximum water pressure	72 psi	5 bar
Standby loss	14 W	
Flow rate (all water flows)	0.5 gal/m @ 44 psi	2.0 l/m @ 3 bar
Power supply Low pressure version	110 V 230 V	110 V 230 V
Power supply High pressure version	230 V	230 V
Protection	IPX4	
Operating temperature	60 – 109 °F	16 – 43 °C
Certifications	NSF / CUPC / CUL in preparation	CE / EMC
<b>BOILING GENERAL</b>		
Storage volume boiling	1.06 gal	4 l
Temperature boiling	208 °F	103 °C
Tap volume boiling	0.7 gal above 208 °F	2.6 l above 98 °C
<b>BOILING LOW PRESSURE VERSION</b>		
Temperature boiling	208 °F	99 °C
Heating time	16 min	
Heating element	1200 W	
<b>BOILING HIGH PRESSURE VERSION</b>		
Temperature boiling	208 °F	99 °C
Heating time	13 min	
Heating element	2100 W	
<b>CHILLED</b>		
Storage volume chiller	0.58 gal	2.2 l
Temperature chilled	39 – 50 °F adjustable	4 – 10 °C adjustable
Tap volume chilled	0.45 gal below 50 °F	1.7 l below 10 °C
Cooling capacity	8 min (ΔT = 10K)	
Cooling principle chiller	Direct cooling	
Refrigerant	R290	
<b>SPARKLING</b>		
Storage volume sparkling	0.16 gal	0.6 l
Temperature sparkling	39 – 50 °F adjustable	4 – 10 °C adjustable
Top volume sparkling	0.32 gal below 41 °F	1.2 l below 5 °C
Cooling principle carbonator	Tank-in-tank setup	
Carbonation sparkling	0.67 – 0.73 oz./gal	5.0 – 5.5 g/l
CO <sub>2</sub> Cartridge	15 oz.	425 g